

The Changing Role of the Physician: A View from the KP School of Medicine



Christine K. Cassel, MD
Executive Advisor to the Dean
Kaiser Permanente School of Medicine

Discussion with the Society of Medical Administrators 2018

Medical Education Challenges Today

- Wellness and resilience
- New pedagogical methods
 - Interactive
 - Technology
- Curriculum overload
 - New biomedical science
 - Health systems science
 - Global health
 - Interpersonal skills
 - Ethics/Humanities
- Cost – student indebtedness
- Diversity and Inclusion
- Training to societal needs: specialty choices
- Aging population/complex illness



Medical Education for the Future

Delivery system changes demand education changes

New skills needed beyond biological science:

- High level communications skills
- Population and community health
- Data analytics
- Systems thinking, change management
- Quality improvement science: reducing waste and improving reliability

“Systems science is a new basic science essential to medical education.”

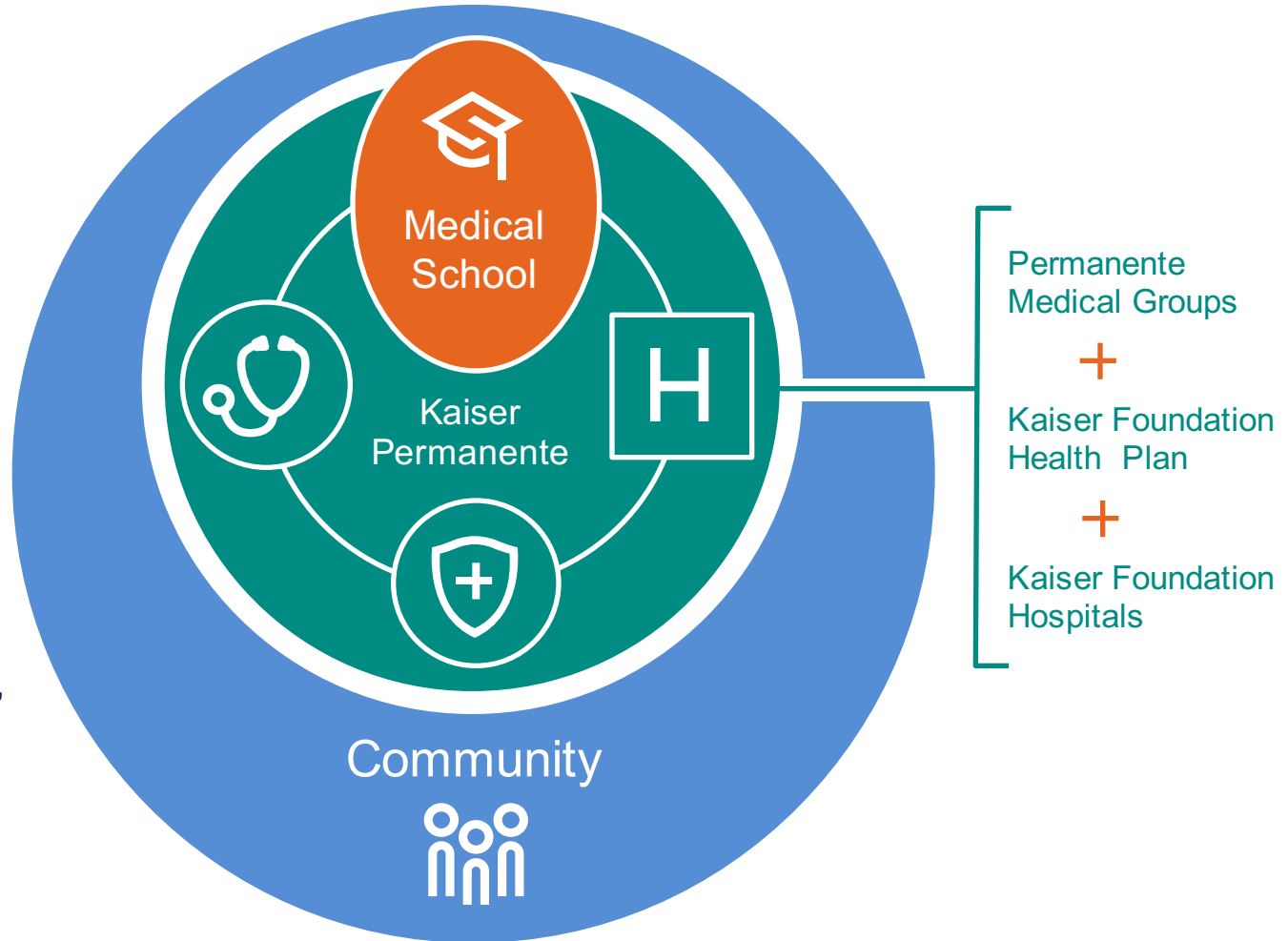


Anticipating Change: 2030 and Beyond

- The changing role of the physician
- Teams, systems, and scope of practice
- Artificial intelligence
- Telemedicine
- Technology empowered consumers
- Economic disparities
- Global migration and disruption
- Natural disasters
- Ethics
- Professionalism?

A different school, a transformative approach

Our school will be embedded in one of the nation's highest performing health care systems and the communities it serves. 50% of visits are virtual, comprehensive information for each visit, extensive comparative effectiveness research, future-facing technology investments.



KP School of Medicine Opportunities and Challenges

- No university
- Departmental structure
 - Clinical science
 - Foundational science
 - Health systems science
- Clinical sites and faculty
- Foundational science recruitment
- Technology choices
 - Anatomy
 - Learning Platform
- Research and scholarship



KP School of Medicine Governance Opportunities and Challenges

- Separate entity
 - How separate?
- Majority independent Board of Directors
 - Key role of internal Board member
- Financing
 - Relationship with parent
 - Implications for accreditation
 - Approach to fundraising

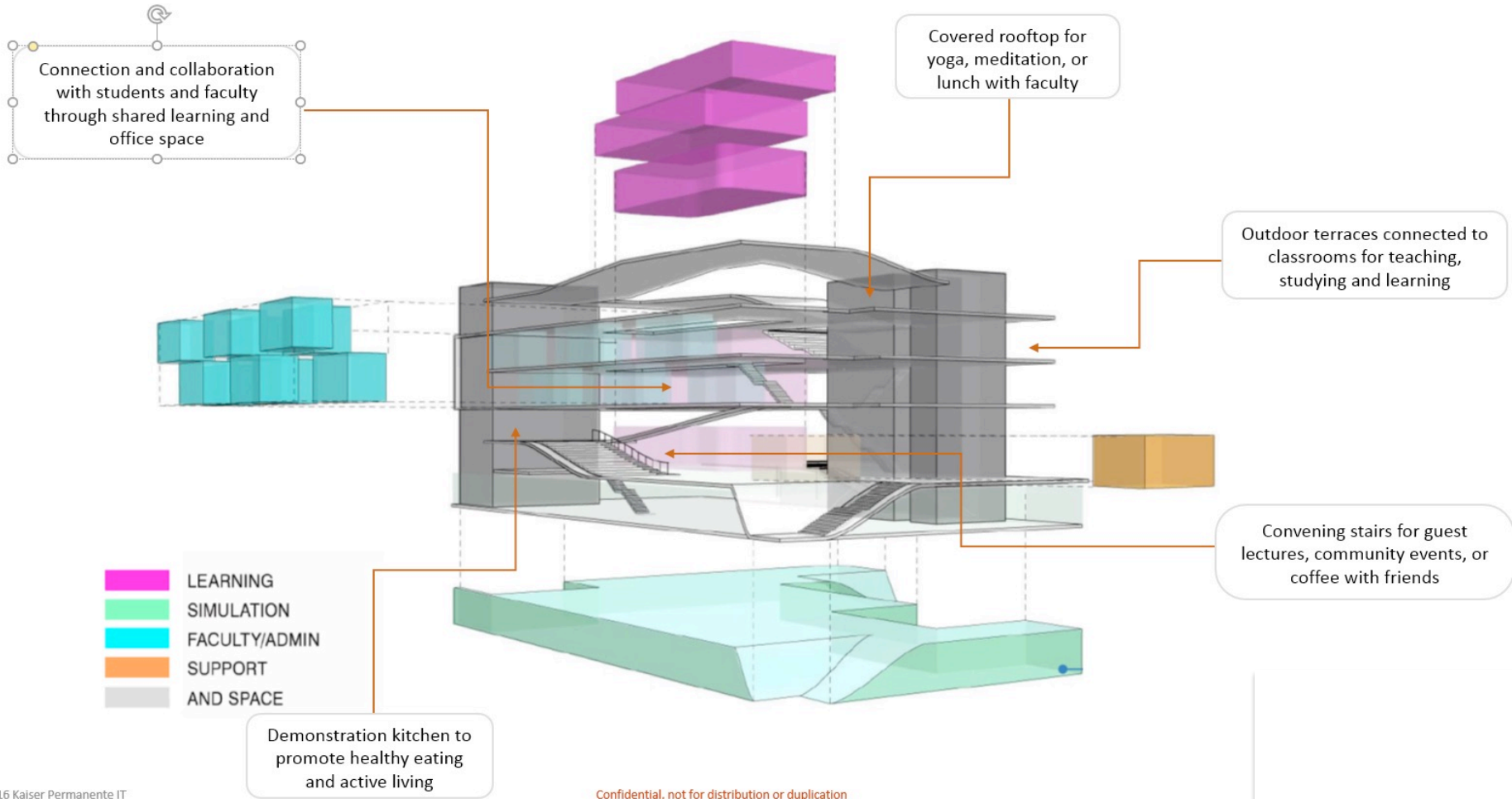
KAISER PERMANENTE SCHOOL OF MEDICINE

Construction started in September 2017

VIEW FROM LOS ROBLES/GREEN



Functional Basis of Design



What is different about the Kaiser Permanente School of Medicine?

Vision

Our graduates will be a diverse community of compassionate healers, life-long learners, and courageous leaders of change within the profession and in society. They will have the skills, capabilities, and resilience to lead the transformation of health care delivery in the nation, and a lifelong commitment to the highest values of the profession.

Mission

To provide a unique undergraduate medical education, embedded in a physician-led health care delivery system, that ignites a passion for learning, a desire to serve, and an unwavering commitment to improve the health and well-being of patients and communities.

Thank you!

